

Gulargambone Sewage Treatment Plant – EPA Licence #350

The [full license for the Gulargambone Sewage Treatment Plant \(EPA #350\)](#) is available from the EPA website.

Licensee Name:

Coonamble Shire Council

Licensee Address:

80 Castlereagh Street, Coonamble NSW 2829

Coonamble STP Address:

Castlereagh Highway, Gulargambone NSW 2828

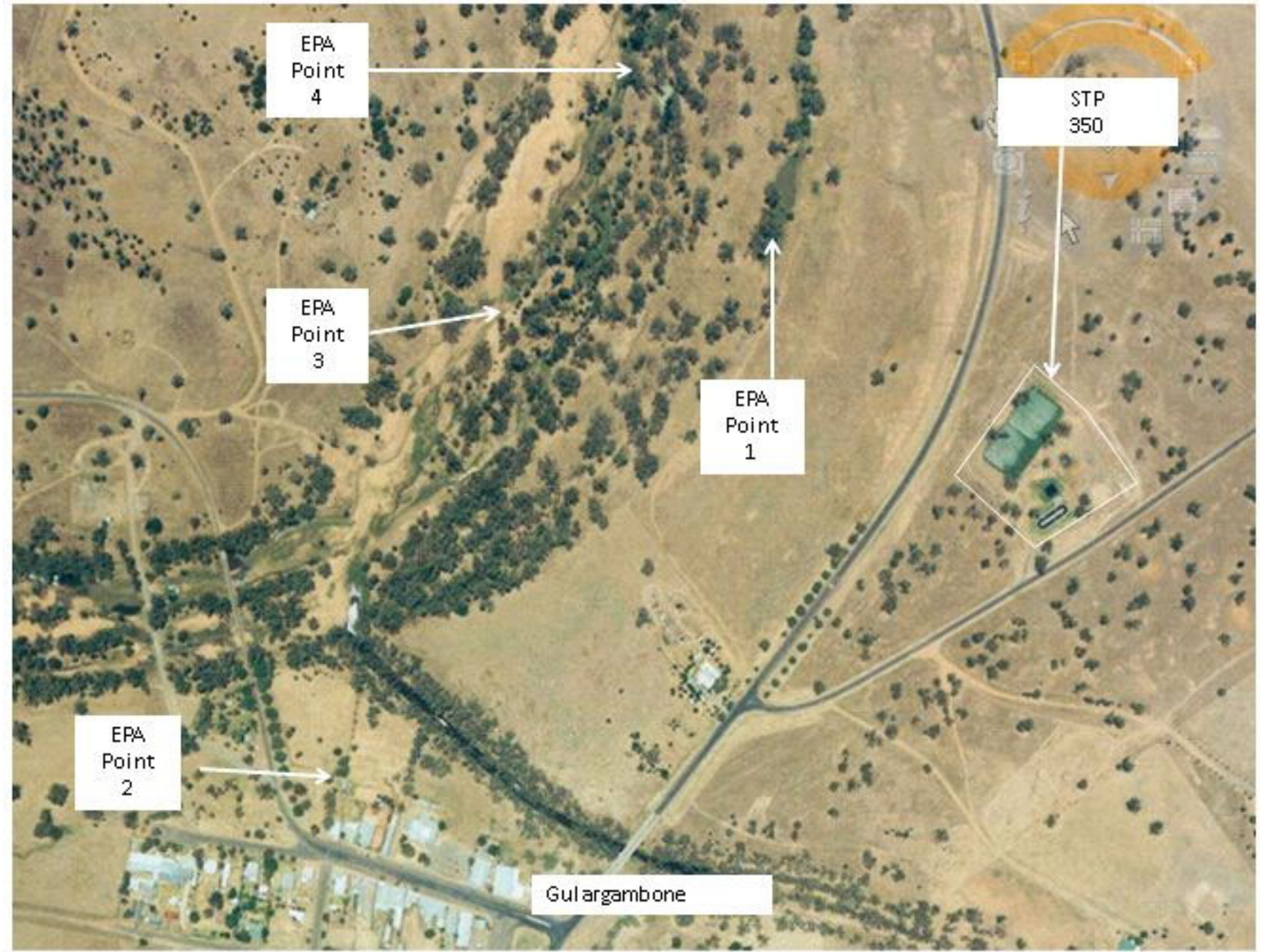
Index

[Point 1](#)

[Point 2](#)

[Point 3](#)

[Point 4](#)



Gulargambone Sewage Treatment Plant – Point 1

[Back to Index](#)

Gulargambone Sewage Treatment Plant – Point 1

		Pollutant	pH	Total Suspended Solids	Biochemical Oxygen Demand	Oil & Grease	Total Nitrogen	Total Phosphorus	Faecal Coliforms	
		Limits Amount	6.5-8.5	30	30	10	15	15	600	
Sampled Date	Date Received	Date Published	pH	Total Suspended Solids	Biochemical Oxygen Demand	Oil & Grease	Total Nitrogen	Total Phosphorus	Faecal Coliforms	Comments
			pH Value	mg/L	mg/L	mg/L	mg/L	mg/L	CFU/100ml	
09-05-17	10-05-17		8.67	37	20	5	5.00	2.77	600	
06-06-17	07-06-17		8.51	16	20	5	5.70	2.06	86	
11-07-17	18-07-17	31-07-17	8.33	11	7	7	6.50	1.59	220	
08-08-17	16-08-17	23-08-17	8.16	31	7	5	5.70	1.64	200	
11-09-17	19-09-17	11-12-17	8.19	55	16	<5	5.90	5.74	~100	
10-10-17	18-10-17	11-12-17	7.89	37	31	<5	8.50	5.84	140000	
07-11-17	15-11-17	11-12-17	8.46	11	3	<5	3.70	3.42	4000	
05-12-17	12-12-17	18-01-18	8.74	47	18	<5	4.10	2.58	1200	
09-01-18	18-01-18	18-01-18	8.32	101	26	<5	4.70	1.72	140000	
07-02-18	14-02-18	08-04-18	8.60	25	16	<5	3.10	0.80	10000	
12-03-18	20-03-18	08-04-18	8.87	96	17	16	3.50	0.87	18000	
10-04-18	18-04-18	13-06-18	8.42	32	13	<5	3.80	1.24	480	
08-05-18	15-05-18	13-06-18	8.72	49	12	<5	5.30	1.01	550	
04-06-18	13-06-18	13-06-18	9.12	43	19	<5	3.50	3.50	48000	
10-07-18	18-07-18	21-08-18	8.17	56	34	7	6.40	2.07	220	
13-08-18	20-08-18	21-08-18	8.91	92	37	<5	6.00	1.58	180	
11-09-18	18-09-18	19-10-18	9.43	94	25	5	5.1	3.93	~120	
08-10-18	15-10-18	19-10-18	8.5	74	19	<5	4.6	3.31	1600	
06-11-18	13-11-18	14-11-18	8.72	55	6	<5	3.7	1.47	~120	
10-12-18	18-12-18	13-03-19	9	111	3	14	5.1	0.87	2600	
12-02-19	20-02-19	13-03-19	9.54	59	8	<5	4.4	2.06	380	
16-04-19	17-04-19	22-10-19	8.46	4	<2	<5	6.3	2.90	2300	
02-07-19	03-07-19	22-10-19	8.41	6	<2	<5	4.3	2.10	280	
23-09-19	24-09-19	22-10-19	9.09	11	7	<5	1.6	4.61	320	
03-12-19	04-12-19	10-02-20	9.5	21	8	<5	3.4	1.79	28	
25/02/20	05/03/20	04/08/20	8.69	38	6	<5	5.4	1.40	1000	
21/04/20	28/04/20	04/08/20	8.58	22	4	<5	5.7	1.37	2500	
29/06/20	06/07/20	04/08/20	9.37	24	7	<5	2.4	1.55	~450	



Gulargambone Sewage Treatment Plant – Point 2

[Back to Index](#)

Gulargambone Sewage Treatment Plant – Point 2 - 2018

Date	Units	Monitoring Frequency Required	January	February	March	April	May	June	July	August	September	October	November	December (2018)	Comments
1	kL/day	Daily	90	46	41	25	55	26	19	40	38	50	34	37	
2	kL/day	Daily	37	52	54	152	57	50	58.5	34	23.5	58	35	17.5	
3	kL/day	Daily	42	46	38	77	45	27.5	57	38	36.5	47	48	45	
4	kL/day	Daily	39	24.5	23.5	48	50	54	54	36	32	60	20.5	35	
5	kL/day	Daily	37	52.5	74.5	55	53	52	66	20.5	34	47	39	57	
6	kL/day	Daily	41	46	48	47	26.5	53	55	38	41	60	42	32	
7	kL/day	Daily	22	41	64	55	49.5	50	57	38	41	20.5	33	41	
8	kL/day	Daily	40.5	44	52	28	50	53	12.5	35	41	50.5	62	35	
9	kL/day	Daily	37	44	49	50.5	50	55	61.5	36	21	47	41	18.5	
10	kL/day	Daily	47	44	46	50	46	24	47	25	37	42	35	40	
11	kL/day	Daily	43	25	30.5	52	56	53	53	34	39	38	27.5	38	
12	kL/day	Daily	34	198	50.5	50	48	54	48	17	37	42	39.5	40	
13	kL/day	Daily	41	45	51	61	25	59	48	35	39	32	36	45	
14	kL/day	Daily	22	49	48	110	52.5	45	43	32	34	18.5	38	55	
15	kL/day	Daily	40.5	48	58	24	44	50	19.5	49	34	42.5	33	43	
16	kL/day	Daily	44	44	50	53.5	50	56	49	37	21	38	37	17.5	
17	kL/day	Daily	39	40	48	42	54	25	50	39	34.5	38	38	45	
18	kL/day	Daily	44	24.5	26.5	48	48	48	49	33	54	62	23.5	45	
19	kL/day	Daily	43	42	50	49	50	50	52	20.5	26	42	42.5	47	
20	kL/day	Daily	38	48	51	53	25.5	49	50	36	42	44	35	43	
21	kL/day	Daily	30.5	64	50	47	55.5	51	51	32	41	19	40	47	
22	kL/day	Daily	45.5	56	42	24.5	50	51	16	36	49	40.5	38	42	
23	kL/day	Daily	41	61	49	58	52	46	52	31	17	34	38	17	
24	kL/day	Daily	40	45	49	50	52	17.5	34	32	55	36	38	40	
25	kL/day	Daily	43	29.5	31.5	46	49	57.5	34	35	50	36	18	0	
26	kL/day	Daily	40	42.5	51.5	58	51	46	34	28.5	52	34	0	37.5	
27	kL/day	Daily	48	0	58	63	27	52	35	42	54	33	36	40	
28	kL/day	Daily	27	23.5	55	53	52	53	35	26	57	23	32	36	
29	kL/day	Daily	46.5		58	26	50	54	17.5	40	52	36.5	40	35	
30	kL/day	Daily	46		59	55	46	55	59	35	17.5	33	46	20.5	
31	kL/day	Daily	44		58		28.5		34	35		37		38.5	
Min Value	kL/day		22	0	23.5	24	25	17.5	12.5	17	17	18.5	0	0	
Max Value	kL/day		90	198	74.5	152	57	59	66	49	57	62	62	57	
Mean	kL/day		41.05	47.32	48.85	53.68	46.71	47.22	43.56	33.73	38.33	40.03	35.52	36.45	



Gulargambone Sewage Treatment Plant – Point 2

[Back to Index](#)

Gulargambone Sewage Treatment Plant – Point 2 - 2018

Date	Units	Monitoring Frequency Required	January	February	March	April	May	June	July	August	September	October	November	December (2018)	Comments
1	kL/day	Daily	38	41	37	49	30	36	38	34	14.5	17	31	23.5	
2	kL/day	Daily	38	37	42	29	50	16.5	33	37	36.5	32	33	33	
3	kL/day	Daily	37	17.5	15	27	39	37	30	32	31	38	16	33	
4	kL/day	Daily	35	39	40	28	53	38	32	16.5	40	29	49.5	31	
5	kL/day	Daily	83	38	36	30	18.5	39	33	37	39	39	37	29	
6	kL/day	Daily	18.5	35	36	26	41	36	35	37	33	17	32	32	
7	kL/day	Daily	42	40	41	22	33	37	18	35	31	35	29	29	
8	kL/day	Daily	38	37	35	29	34	33	30	31	16.5	36	34	23	
9	kL/day	Daily	38	38	37	27	32	15.5	41	36	37.5	35	32	30.5	
10	kL/day	Daily	42	19.5	17	34	44	36	34	33	33	35	18	34	
11	kL/day	Daily	37	42	39.5	34	29	37	36	14	32	33	35.5	33	
12	kL/day	Daily	38	41	38	34	17.5	33	31	34	32	30	31	24	
13	kL/day	Daily	20.5	36	38	35	40.5	36	27	36	28	15	35	36	
14	kL/day	Daily	39.5	40	42	17	33	35	13.5	39	29	41	34	27	
15	kL/day	Daily	39	41	39	38.5	34	33	38.5	42	16	36	30	45	
16	kL/day	Daily	36	31	46	34	33	17	34	27	31.5	35	28	30.5	
17	kL/day	Daily	35	20.5	13	37	34	34	34	31	33	30	14	29	
18	kL/day	Daily	35	39	46	35	33	37	32	16	29	32	32.5	29	
19	kL/day	Daily	35	31	45	26	17	35	34	36	32	30	32	27	
20	kL/day	Daily	19.5	38	38	44	40.5	33	33	35	32	20	30	28	
21	kL/day	Daily	44.5	38	41	20	31	34	16.5	31	28	37	32	25	
22	kL/day	Daily	41	39	41	36.5	39	32	32.5	31	16.5	31	40	30.5	
23	kL/day	Daily	40	38	41	36	38	16.5	34	33	36.5	36	39	30.5	
24	kL/day	Daily	41	19	18	38	40	37	31	32	33	32	11.5	30	
25	kL/day	Daily	34	44.5	42	35	36	33	31	16.5	35	33	39.5	27	
26	kL/day	Daily	34	35	43	36	17.5	32	33	33	33	38	39	27	
27	kL/day	Daily	18.5	37	43	35	41	32	32	33	33	15.5	40	23	
28	kL/day	Daily	48.5	41	40	19	49	35	16	32	33	30	40	23	
29	kL/day	Daily	34		38	39.5	58	35	34	32	15.5	31	31	36	
30	kL/day	Daily	50		121	23	42	18.5	33	32		33	32	29	
31	kL/day	Daily	36		19.5		38		33	32		31		27	
Min Value	kL/day		18.5	17.5	13	17	17	15.5	13.5	14	14.5	15	11.5	23	
Max Value	kL/day		83	44.5	121	49	58	39	41	42	40	41	49.5	45	



Mean	kL/day		37.60	35.46	38.97	31.78	35.98	31.97	31.06	31.48	30.00	31.05	31.92	29.50	
Date Published	1/12/20														

Gulargambone Sewage Treatment Plant – Point 2

[Back to Index](#)

Gulargambone Sewage Treatment Plant – Point 2 - 2018

Date	Units	Monitoring Frequency Required	January	February	March	April	May	June	July	August	September	October	November	December (2018)	Comments
1	kL/day	Daily	30	44	35	64	87	44	40	47	52	39		37	
2	kL/day	Daily	41	98	31	47	49	43	42	24.5	52	39	33.5	17.5	
3	kL/day	Daily	47	40	33	70	22	45	39	23.5	51	34	35	45	
4	kL/day	Daily	42	43	31	152	40.5	43	38	59	49	18	29	35	
5	kL/day	Daily	24.5	73	34	23	54	44	22.5	33	46	37.5	32	57	
6	kL/day	Daily	46	58	207	62	43	38	40.5	49	19	38	36	32	
7	kL/day	Daily	39	49	54	54		20	40	45	51.5	39	38	41	
8	kL/day	Daily	40	22.5	69.5	48	23	43	44	49	57	39		35	
9	kL/day	Daily	40	50	43	43	44	45	39	22.5	50	38	33	18.5	
10	kL/day	Daily	46	37	47	139	20.5	41	40	45.5	45	41	33	40	
11	kL/day	Daily	47	127	46	166	45.5	44	70	45	45	19.5	39	38	
12	kL/day	Daily	21	127	45	17.5	41	41	22	42	39	41	32	40	
13	kL/day	Daily	54.5	45	45	83.5	40	43	58	45	19.5	37	39	45	
14	kL/day	Daily	46	42	47	79	42	20	49	44	38	36	32	55	
15	kL/day	Daily	44	36	20.5	45	35	46	46	50	33	39		43	
16	kL/day	Daily	42	21	45.5	55	47	44	38	16.5	32	39	35	17.5	
17	kL/day	Daily	90	34.5	46	41	22	45	40	47.5	36	31	34	45	
18	kL/day	Daily	54	61	45	43	41.5	47	38	43	33	22.5	32	45	
19	kL/day	Daily	42	61	47	22	42	44	18.5	41	32	41.5	33	47	
20	kL/day	Daily	54.5	73	42	43.5	41	41	38.5	37	21	36	45	43	
21	kL/day	Daily	60	84	36	43	39	22	47	37	38	39	37	47	
22	kL/day	Daily	59	41	21	41	44	54	41	57	40	41		42	
23	kL/day	Daily	52	16	46.5	38	36	41	48	22	40	42	39.5	17	
24	kL/day	Daily	61	35	38	42	17.5	35	44	40.5	45	65	41	40	
25	kL/day	Daily	65	34	40	42	42.5	33	41	44	44		33	0	
26	kL/day	Daily	17	35	41	20.5	41	35	21.5	43	32	47	45	37.5	
27	kL/day	Daily	71.5	33	32	42	42	38	52.5	44	20.5	45		40	
28	kL/day	Daily	68	34	40	42	41	24	46	43	37	45		36	
29	kL/day	Daily	89	29	43.5	43	41	43.5	43	43	33	43		35	
30	kL/day	Daily	98		43	40	40	41	46	19.5	38	41		20.5	
31	kL/day	Daily	72		72		19.5		48	48		37		38.5	
Min Value	kL/day		17	16	20.5	17.5	17.5	20	18.5	16.5	19	18	29	0	



